

KITCHEN + BATH MATERIAL MAGIC

SILVER AND GOLD ARE MORE THAN HOLIDAY MAINSTAYS: THESE RICH METALS ARE BRINGING SPARKLE TO THE HOME'S POWERHOUSE ROOMS ALL YEAR-ROUND.

WRITTEN BY BRIELLE M. FERREIRA

There's a reason why materials like silver and gold are such sought-after options in the worlds of fine jewelry and art: The metals are as practical as they are beautiful—their patented shimmer and shine as powerful a statement as their longevity. So, it makes sense that as the kitchen and bathroom become more and more like proper gems in the center of the homes they inhabit, that designers and architects alike would begin to implement a bit of similar material magic into their designs—a wonderfully sculptural knob in hand-cast bronze in the bath or a ribbon of brass inlaid into a complicated tile pattern on a backsplash. Here, we borrow the best of bling to celebrate kitchens and baths that are both high functioning and high fashion.

HAUTE DISH CAITLIN MURRAY

Los Angeles-based interior designer Caitlin Murray uses big doses of high-gloss brass and emerald to transform an entertainment-friendly kitchen into a moody, modern masterpiece that is huge on style. blacklacquerdesign.com



Share your vision for this enviable space.

The client is young and hip and works in tech, so my partner at the time, Caitlin McCarthy of Caitlin McCarthy Design, and I felt like there was a wonderful opportunity to do something fun and out there. When we found the color for the cabinets—Benjamin Moore's Chrome Green—we knew we had exactly what we were looking for. It informed everything we did.

Favorite thing about this showstopping kitchen?

I love the edgy black Marquina marble and the way that the material interacts with the other elements in the space, like the lacquered brass and the rich green of the cabinets. The resulting combination just reads as really luxurious and incredibly bold. Everything about this kitchen was designed to stand out, and that's what it does.

Why did you opt for brass fixtures and hardware?

We didn't want to do anything that was expected, and I think using chrome or polished nickel would have been pretty, for sure, but more subtle than what we wanted to achieve. The lacquered brass, on the other hand, is super dramatic and reads so perfectly with the color story in the space that I'm not sure the kitchen would feel as balanced without it.

The kitchen cabinets are painted in Benjamin Moore's Chrome Green, the perfect backdrop for the high shine of the pendants from Tom Dixon, LawsonFenning stools, Rubinet faucet and pulls from Liz's Antique Hardware. The backsplash is from Ann Sacks, and the appliances are Viking.



KITCHEN PHOTO: MARY COSTA, HEADSHOT: COURTESY BLACK LACQUER DESIGN

ON THE LINE

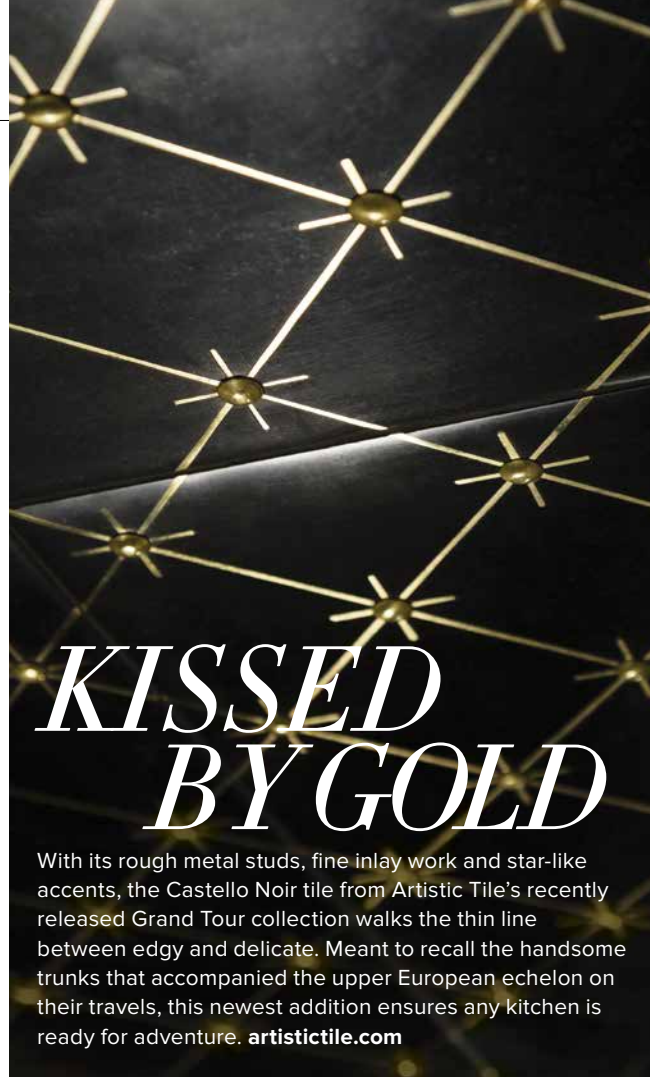
Poggenpohl continues to challenge modern-is-cold misconceptions with +Artesio, a modular kitchen line that blends materials for maximum effect—pairing glass-front cabinets with warm wooden backsplashes and sleek aluminum panels for a hint of sparkle. In this handsome San Francisco space, for example, designer I-Ching Ueng takes the mix one step further, integrating the chromed-out accents on the kitchen's focal wall with an attention-grabbing bronze chandelier overhead, the result of which is an effortlessly chic retreat that's perfect for entertaining. poggenpohl.com



Chill FACTOR

WHIRLPOOL SUNSET BRONZE

If you're craving an alternative to the decades-old stainless-steel appliance trend, Whirlpool's latest offering is a welcomed palate cleanser in the kitchen sphere. This spring, the company will introduce a full suite of kitchen appliances available in a warm-toned painted metallic named Sunset Bronze, which is sure to turn some heads. whirlpool.com



KISSED BY GOLD

With its rough metal studs, fine inlay work and star-like accents, the Castello Noir tile from Artistic Tile's recently released Grand Tour collection walks the thin line between edgy and delicate. Meant to recall the handsome trunks that accompanied the upper European echelon on their travels, this newest addition ensures any kitchen is ready for adventure. artistictile.com



TOP DRAWER

While German-based kitchen manufacturer Eggersmann has become well-known in the States for its sleek, contemporary kitchens with razor-sharp lines, the company hasn't been resting on its laurels. In fact, the brand's newest iterations prove it believes it's what's on the inside that counts. Leather accents and crisp stainless steel have become foundations for the company's carefully rendered drawer organization units, including specially crafted inserts that are really spicing things up. eggersmann.com

TAILOR MADE

For tile manufacturer New Ravenna Mosaic's latest offering—the Parterre collection—the company got personal, tasking its consumers with flexing their creative muscles thanks to the line's endless possibilities for customization. When designers Sara Baldwin and Paul Schatz began developing the designs, they wanted to create surfaces with the flexibility to encourage tile lovers to leave their mark, so the 18 laser-cut variations they crafted allow them to substitute natural stone with Serenity glass, shell, ceramic and even aluminum to build unique combinations for bathrooms that are as individual as the people who inhabit them. newravenna.com



GIVE ME FIVE



Hand-poured and -forged on the third floor of a charming narrow townhouse in Greenwich Village, New York, this whimsical hand-shaped pull from P.E. Guerin exemplifies all the qualities the 158-year-old company strives to instill in each of its products: timelessness and dedication to craft paired with capturing the feeling of the maker's hand (literally). peguerin.com



SHOWER POWER

AXOR 240

Axor teamed up with Swedish design studio Front to launch 240, a line of conical fixtures that celebrate the beauty of the bathroom—bringing the pipes that are normally hidden behind walls into the space, showcasing the path the water takes to join in on essential functions. Available in chrome and copper, this pretty sculptural piece is on its way to becoming a cult classic. hangrohe-usa.com

Stone SOAK

Crafted from a single piece of stone, Lapidida's Italian Arabescato marble bathtub is designed to make a statement. While its \$45,000 price tag ensures the piece is as exclusive a showpiece as you can imagine for the bath, truly it is the bathtub's creamy color and dreamy gray veining that makes it a real standout. The best part? Since it's individually laser cut from one-of-a-kind antique stone in England, no two pieces will ever be alike. lapidida.com



The bathtub is from Victoria + Albert; the chandelier is from 1stdibs. All of the hardware used throughout the space is from Waterworks, with the exception of the vintage seahorse hardware sourced from the Rose Bowl Flea Market.



MIDAS TOUCH

Designers have been busy bringing gold and brass into the bath to pretty up what has, in the past, been purely practical, and these warm-toned materials are quickly giving tried-and-true chrome a run for its money. According to Tamara Kaye-Honey, the designer responsible for this pretty Southern California room, this change is only natural. “There’s a lovely patina that comes from working with materials like unlacquered brass,” she says. “Plus, when paired with white, the palette is soothing while also feeling fresh and modern.” On the following page, interior talents from across the country share their favorite golden-hued spaces from their own design portfolios.



“BRINGING IN BRASS IN SMALL TOUCHES IS A GREAT WAY TO INTRODUCE WARMTH AND CLASS TO AN OTHERWISE SIMPLE SPACE.”

-KIRSTEN KRASON, houseofjadeinteriors.com



“THE BRASS MIRROR WORKS GREAT WITH THE OIL-RUBBED BRONZE HERE. I PREFER TO MIX AND MATCH. IT MAKES THINGS LOOK SO MUCH MORE AUTHENTIC.”

-LINDSEY CORAL HARPER, lchinteriors.com



“There’s more of a story to a space that uses brass instead of chrome or stainless steel. Brass adds a maturity and history to any room.”

-RYAN WHITE, ryanwhitedesigns.com

Clockwise from top left: The team at House of Jade Interiors struck a winning combination in this bathroom by pairing brass-framed mirrors from One Kings Lane with pendants from Schoolhouse Electric & Supply Co. The Waterworks vanity, faucet, mirror and floor tile in this midcentury-inspired bathroom by Ryan White all contribute to the space’s timeless look; the sconces are from Circa Lighting. In this powder room by Lindsey Coral Harper, the vintage mirror from Mrs. Howard is a true standout against the teal Farrow & Ball wallpaper; the onyx countertop is from R.G. New York Tile.